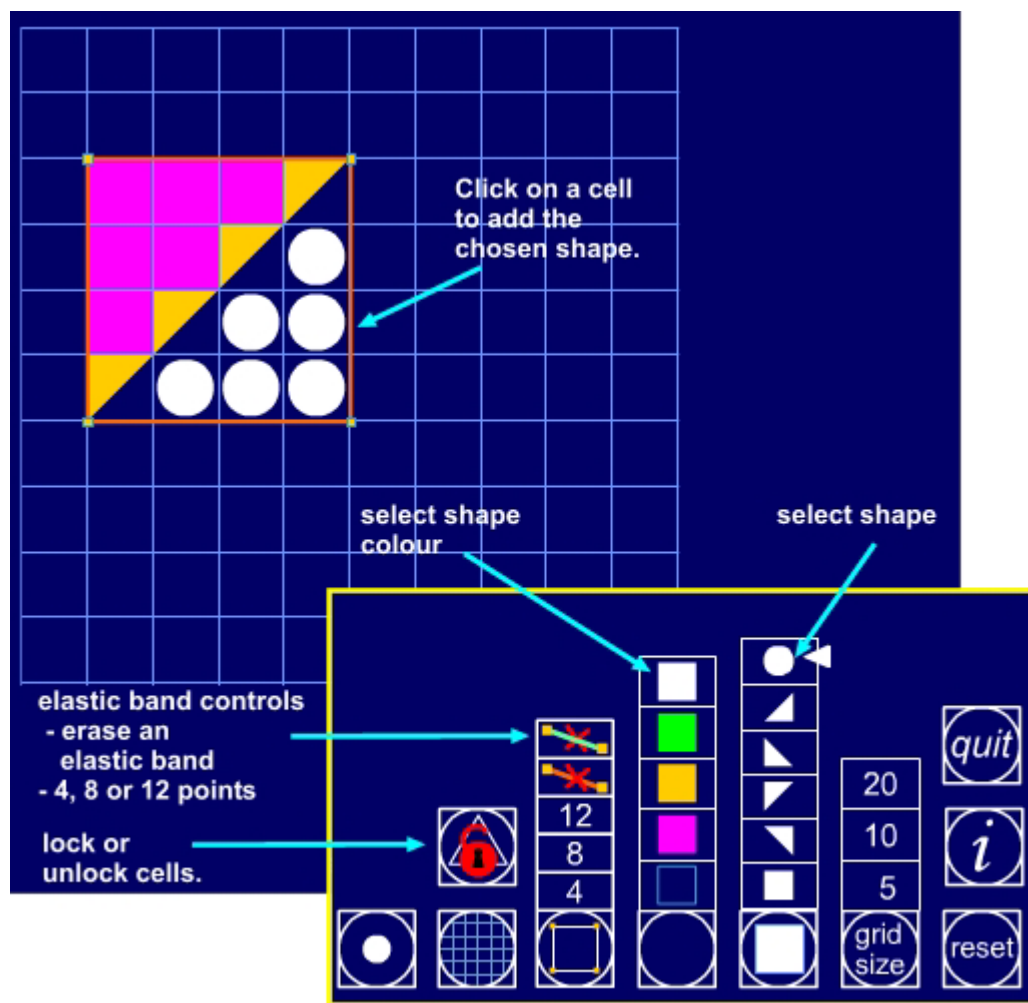


## Area

This ITP allows you to colour in cells on a grid, a full cell or half a cell, or to place a circular counter into a cell. There are three choices of grid size: 5 by 5, 10 by 10 or 20 by 20. The grid can be hidden or replaced by a pin board around the points of which rubber bands can be stretched.

The making of different shapes and patterns can support the teaching of number, shape and space and problem solving, for example, to identify the positions of counters in a given sequence or to find the number of nets of an open cube. The flexibility offered by the ITP allows it to be used to support a variety of teaching and learning contexts in mathematics.



Up to two 'elastic bands' can be stretched to enclose areas.

You can chose elastic bands with 4, 8 or 12 points.



Place a marker dot on the grid. Press and drag it to any point.

Use the marker as a reference when discussing rotation around a point.



The lock button locks all the cells so that they cannot be coloured.

This prevents cells being changed when you want to touch them to make a teaching point.



Set the grid size to 5x5, 10x10 or 20x20